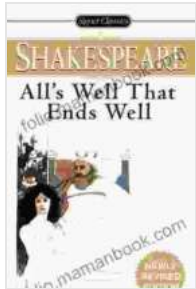


All's Well That Ends Well: A Comprehensive Exploration of Shakespeare's Enduring Romantic Comedy



All's Well That Ends Well (Signet Classics)

by William Shakespeare

★★★★☆ 4 out of 5

Language	: English
File size	: 2173 KB
Text-to-Speech	: Enabled
Enhanced typesetting	: Enabled
Word Wise	: Enabled
Screen Reader	: Supported
Print length	: 170 pages
Mass Market Paperback	: 288 pages
Lexile measure	: NC1110L
Item Weight	: 5 ounces
Dimensions	: 4.13 x 0.77 x 6.6 inches



All's Well That Ends Well, one of William Shakespeare's most enigmatic and thought-provoking romantic comedies, has captivated audiences for centuries with its intricate plot, complex characters, and profound examination of love, gender roles, and social hierarchy. This in-depth article delves into the rich tapestry of the play, exploring its characters, themes, literary devices, and enduring legacy.

Characters

Helena

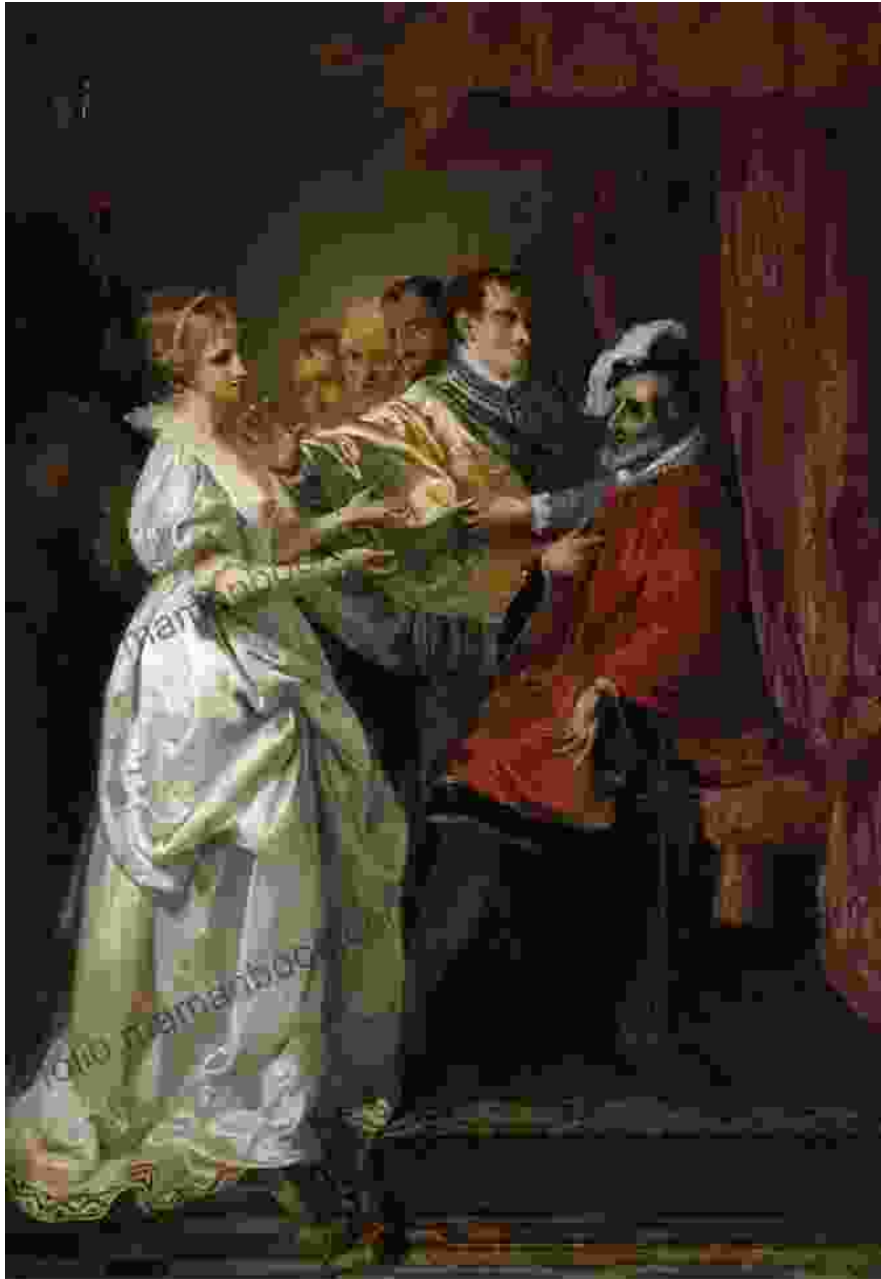
"From lowest place when virtuous things proceed,
The place is dignified by th' doer's deed.
Where great additions swell 's, and virtue none,
It is a dropsied honour. Good alone
Is good, without a name! Vileness is so."

—The King advising Bertram not to disdain the title 'a poor physician's daughter' (*All's Well That Ends Well*, 2.3.126-130)

ILLUMINATING
Shakespeare

Helena, the central protagonist of the play, is a young and beautiful woman whose unwavering love for Bertram drives the plot forward. Despite being of a lower social status than Bertram, Helena possesses remarkable intelligence, wit, and determination. Her relentless pursuit of her beloved, even in the face of rejection and societal disapproval, makes her an unforgettable and inspiring character.

Bertram



Bertram, a young and arrogant count, is the object of Helena's affections. Initially, he disdains Helena due to her lower social status, but a series of events forces him to confront his true feelings for her. Bertram's journey from haughty disdain to reluctant acceptance and eventual love provides a complex and nuanced exploration of the nature of love and prejudice.

Other Notable Characters

- **The King of France:** A wise and benevolent ruler who plays a pivotal role in resolving the conflict between Helena and Bertram.
- **Countess of Rossillion:** Bertram's mother, who disapproves of Helena's pursuit of her son.
- **Parolles:** A boastful and cowardly soldier who serves as a foil to Bertram's true nobility.
- **Lafeu:** A witty and wise old lord who serves as a mentor to Bertram.

Themes

Love and Marriage

The play explores the nature of love and marriage from various perspectives. Helena's unwavering love for Bertram challenges societal norms and the traditional power dynamics between men and women. The play also examines the tension between romantic love and arranged marriages, questioning the role of choice and consent in marital unions.

Gender Roles and Social Hierarchy

All's Well That Ends Well reflects the rigid social hierarchy of Elizabethan society. Helena's lower social status creates significant obstacles to her pursuit of Bertram. The play examines the ways in which gender and social class shape relationships and opportunities.

Redemption and Forgiveness

Both Helena and Bertram undergo significant journeys of redemption and forgiveness. Helena's unwavering love for Bertram ultimately leads him to recognize his own shortcomings and to accept her as his equal. The play

explores the power of forgiveness to heal wounds and bridge social divides.

Literary Devices

Comic Elements

Despite its serious themes, *All's Well That Ends Well* contains a significant amount of humor. Shakespeare employs witty dialogue, slapstick comedy, and mistaken identities to create a lively and entertaining atmosphere. The play's comedic elements serve to balance the heavier themes and to provide moments of levity.

Irony and Dramatic Tension

The play is rich in irony, creating dramatic tension and driving the plot forward. Bertram's initial rejection of Helena, his subsequent realization of her worth, and the eventual happy ending all hinge on ironic twists and turns.

Symbolism and Foreshadowing

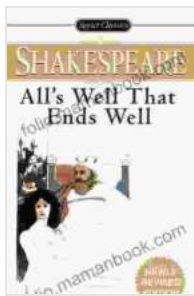
Shakespeare employs symbolism and foreshadowing throughout the play. The ring that Helena receives from the King functions as a symbol of her love and unwavering faith. The reference to the "all's well that ends well" proverb in the play's title foreshadows the ultimate resolution of the conflict and the happy ending.

Enduring Legacy

All's Well That Ends Well has had a profound impact on literature and popular culture. The play's exploration of love, social hierarchy, and redemption continues to resonate with audiences today. It has been

adapted into numerous films, television shows, and stage productions, and its characters and themes continue to be analyzed and debated by scholars and critics.

All's Well That Ends Well is a captivating and multifaceted romantic comedy that explores timeless themes of love, gender, and redemption. Through its memorable characters, witty dialogue, and profound insights, the play offers a rich and rewarding experience for readers and audiences alike. Its enduring legacy as a literary masterpiece is a testament to the enduring power of Shakespeare's storytelling and the universality of human emotions.



All's Well That Ends Well (Signet Classics)

by William Shakespeare

★ ★ ★ ★ ☆ 4 out of 5

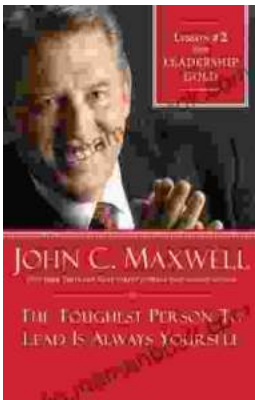
Language	: English
File size	: 2173 KB
Text-to-Speech	: Enabled
Enhanced typesetting	: Enabled
Word Wise	: Enabled
Screen Reader	: Supported
Print length	: 170 pages
Mass Market Paperback	: 288 pages
Lexile measure	: NC1110L
Item Weight	: 5 ounces
Dimensions	: 4.13 x 0.77 x 6.6 inches





How to Make Decisions Easily & Effortlessly: The Ultimate Guide to Happiness and Success

The Different Types of Decisions There are two main types of decisions: Simple decisions are decisions that are easy to make and have little impact on your life. For...



Lessons From Leadership Gold

Leadership is a complex and multifaceted skill that requires a combination of natural talent, hard work, and dedication. While there is no...